

SHARP®

Zaurus File Transfer application


**OPERATION MANUAL
for
the SL-6000L/SL-6000N**

This operation manual describes both the SL-6000L and SL-6000N. “Zaurus” is used when describing both models, otherwise the model name is used.

Conditions for Using the Zaurus File Transfer Application Software

Sharp Corporation (hereafter referred to as Sharp), under the following conditions, grants the customer a non-exclusive license to use the Sharp original software for PCs, called the Zaurus File Transfer application software (hereafter referred to as this software), that accompanies this product. Use of the software by the customer indicates agreement to the following conditions:

- 1.** Sharp will make no compensation for damages to the customer caused by the use of this software, except for compensation required by law.
- 2.** Sharp may change the specifications of this software at any time without advance notice.

-
- Microsoft, Windows, and PowerPoint are either registered trademarks or trademarks of Microsoft Corporation in the United States and/or other countries. Microsoft Word and Microsoft Excel are products of Microsoft Corporation. All rights reserved by Microsoft Corporation.
*.doc, *.xls and *.ppt files are file extensions of Microsoft Office products.
 - HancomMobileOffice, HancomMobileWord, HancomMobileSheet and HancomMobilePresenter are registered trademarks of HancomLinux, Inc.
 - CompactFlash is a trademark of SanDisk Corporation.
 -  SD logo is a trademark.
 - MultiMediaCard is a trademark of Infineon Technologies AG.
 - All other company and product names are trademarks of their respective owners.

-
- This manual uses the following substitute expressions:
“SL-6000L/SL-6000N” → “Zaurus”
 - The information and screens provided in this manual are subject to change without notice.

The Zaurus File Transfer application will provide a quick and easy transfer of files between the PC and the Zaurus (SL-6000L/SL-6000N).

- Display the memory of the Zaurus on your PC.
- Drag-and-drop files to transfer between your Zaurus and a PC.
- The files created on your PC with programs like Microsoft® Word and Microsoft® Excel, etc. can be transferred to this Zaurus, and you can bring them with you wherever you go.
- HancomMobileWord and HancomMobileSheet files edited on this Zaurus can be transferred to your PC and used there.

Note:

- *When you have set or changed the Security passcode on your Zaurus, enter and save the same passcode on the “Zaurus Manager” screen (see page 4). Otherwise you will be asked for the passcode every time communication between the Zaurus and your PC is initiated.*
- *If you changed the method of connection in the “PC Link” application on your Zaurus, also change the setting on the “Zaurus Manager” screen to the same method as on the Zaurus (see page 4). Otherwise communication between the Zaurus and your PC will not be performed.*
- *While the Zaurus File Transfer is being used, do not perform any operations on the Zaurus, do not turn off the power, nor remove it from the Docking Station.*
- *When using the Zaurus File Transfer the AC adapter must be connected.*

Installation

Before using the Zaurus File Transfer application, you must install the Zaurus File Transfer application software and USB drivers. If they are already installed, see the next page. If they are not installed, see the separate Start-up Guide for instruction on installation.

The rest of this manual will explain the instructions assuming the Zaurus File Transfer application software and USB drivers are already installed. To connect the Zaurus to your PC, see Appendix pages in the separate Start-up Guide and use the supplied Docking Station.


Zaurus Manager Setting

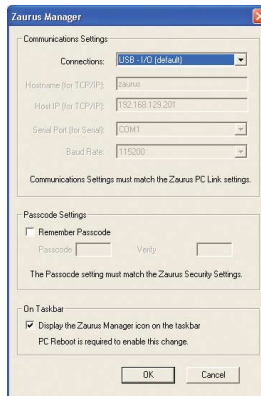
When you have not set (changed) the passcode nor changed the method of connection with the Zaurus, reading this section is unnecessary. Change this setting only when necessary.

The procedures for setting up applications for communication between the Zaurus and your PC (Zaurus File Transfer, Backup/Restore, Intellisync for Zaurus, Qtopia Desktop for Zaurus, etc.) must be set up properly for communication.

- When you have set or changed the Security passcode on your Zaurus, enter and save the same passcode on this Zaurus Manager screen. Otherwise you will be asked for the passcode every time communication between the Zaurus and your PC is initiated.
- If you changed the method of connection in the PC Link setting on your Zaurus, change the following setting to the same method as on the Zaurus. Otherwise communication between the Zaurus and your PC will not be performed.

Confirm the Zaurus Manager setting contents according to the following instructions and change them as required.

1. Turn off the power on the Zaurus, connect it to the PC (see the separate Start-up Guide), then turn the power back on again. Wait for a few moments (approx. 15 seconds).
2. On your PC, click the Start menu, then (All) Programs → Sharp Zaurus 2 → Zaurus Manager.
(Or right-click the Zaurus Manager icon  in the Windows system tray and select “Zaurus Manager” from the menu.)
The Zaurus Manager screen will appear.



3. Confirm the **Communication Settings**.

This will set the method of connection with the Zaurus.

USB - I/O (default)	Select "USB - I/O (default)" to set the communication to the USB connection with the Docking Station.
USB - TCP/IP (advanced)	For future function expansion. (The following name and IP Address columns apply when this method has been selected.)
Serial	Select "Serial" to set the communication to the serial connection. (Optional Serial Cable CE-170TS is required.) In this case, it is necessary to set the port and baud rate. Port: The default setting is "COM1". Select a COM port that does not conflict with others. Baud Rate: The default setting is "115200". Lower the baud rate if the number of communication errors is excessive.

Note:

- On the Zaurus, use the following steps to check or change the PC Link Settings. For Details, see the separate Operation Manual.
 1. On the Settings Home screen, tap the PC Link icon.
The PC Link screen will appear.
 2. Select "USB - I/O (default)" or "Serial" to change the setting to the same method as on the Zaurus Manager screen, when necessary.


4. Confirm the Passcode Settings.

When communication between the Zaurus and the PC is initiated, verification of both passcodes on the Zaurus and the PC will be made. Communication will start when the passcodes match.




Perform the settings on this screen according to the following instructions:

1. Check the "Remember Passcode".
2. Enter the same passcode as that on the Zaurus to both the input spaces.
 - When a passcode has not been set on the Zaurus Manager screen, the screen for passcode input will be displayed every time communication is initiated. When the passcode is entered on that screen, communication will be initiated.
 - When a passcode has not been set on the Zaurus, do not check the "Remember Passcode" on the Zaurus Manager screen.

5. Confirm the Resident Setting on the taskbar.


Set whether or not the Zaurus Manager icon  is to be displayed (resident) in the Windows system tray. (The default setting is checked.)

This check is required to start synchronization for Intellisync for Zaurus or Qtopia Desktop for Zaurus using the Docking Station SYNC button or the Sync Start button of the Zaurus.

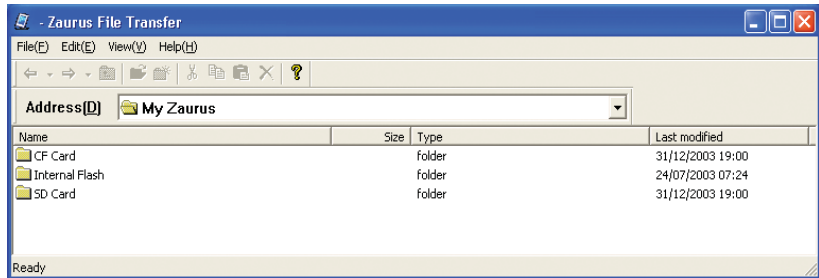
- Residence of the  icon is not required for execution of Zaurus File Transfer or Backup/Restore. To cancel the  icon residency temporarily, right-click the  icon and then click "Exit" from the menu. (However, after a reboot, the icon will be displayed again.) To cancel the residency continuously, check this box and reboot the PC.

6. Confirm the above setting contents and click "OK".

Displaying the Zaurus Memory on the PC

1. Turn off the power on the Zaurus, connect it to the PC (see the separate Start-up Guide), then turn the power back on again. Wait for a few moments (approx. 15 seconds).
2. Click the Start Menu, then (All) Programs → Sharp Zaurus 2 → Zaurus File Transfer → Zaurus File Transfer.
(Or double-click the  icon created on the desktop of the PC.)

The Zaurus File Transfer application will start and the application window will be displayed on the desktop. The Internal Flash memory and expansion memory cards* will be displayed in the folder list.



“Internal Flash” folder Displays the contents of the Internal Flash memory.
Below the “Internal Flash” folder are “Image_Files”, “Text_Files”, and “Install_Files” folders, etc.

“CF Card” folder* Displays the contents of an expansion memory card (CF memory card).

“SD Card” folder* Displays the contents of an expansion memory card (SD/MMC memory card).

* The “CF Card” and “SD Card” folders will be displayed whenever an expansion memory card is inserted into the Zaurus.

3. Double-click the folder you wish to open.
(Or select (click) the folder and click “Open” from the “File” menu.)
The folders in the Zaurus will be displayed (such as “Image_Files”, “Install_Files”, or “Text_Files”).

4. If you double-click a folder, the files within the folder (such as those created with the Imaging or the Text Editor application) will be displayed.

Note:


- *Though files in this application window can be opened on the PC, they are read-only files and can not be edited.*
- *To move to the folder one level higher than the current folder, click “Up One level” from the “View” menu.*
- *If HancomMobileWord or HancomMobileSheet has been started and data is saved, an “application” folder will automatically be created in the “Internal Flash” folder.*
- *When communication between the Zaurus and the PC is in progress, a box will appear indicating the progress status with messages and bars. While launching the application or communicating with the Zaurus, the lower bar will indicate the status. While transferring files, the upper bar will indicate the complete status of transferring files, and the lower bar will indicate the status for each file.*

Copying Files

1. Display and open the destination folder in the Zaurus memory to the desktop on the PC following the steps on pages 6 and 7.
2. Display the desired file on the PC using Microsoft® Windows® My Computer or Explorer.
3. Copy the file from the PC to the Zaurus using the mouse.
Drag a file saved on the PC and drop it into the destination folder window of the Zaurus.
(Or copy and paste the file by selecting the “Copy” and “Paste” from “Edit” menu on both the PC and the Zaurus windows.)

The file on the PC will be copied into the memory of the Zaurus.

Note:

- *Multiple files or folders can be copied at once.*
 - *When copying files or folders, first, open the destination folder within the “Internal Flash”, “CF Card”, or “SD Card” folder, and then copy the file or the folder into its window space.*
 - *Even in the Zaurus File Transfer application window, if a file or a folder is copied into a location outside the “Internal Flash”, “CF Card”, or “SD Card” folder, the file or the folder cannot be displayed on the Zaurus.*
 - *When copying “.ipk” files (add-on software) into the Zaurus, it is recommended to copy the files into the “Install_Files” folder for arrangement. Double-clicking the “Internal Flash” folder will display the “Install_Files” folder. These files can be installed using the “Add/Remove Software” application after being copied to the Zaurus (see the separate Operation Manual).*
 - *You can also copy the files or the folders from the Zaurus onto your PC by dragging-and-dropping files or the folders; however you cannot cut and paste files or folders from the Zaurus to the PC using Microsoft® Windows® 98/98SE.*
4. Click “Exit” from the “File” menu.
(Or click the  at the upper-right corner of the Zaurus File Transfer application window.)
The application window will close.

5. Turn off the power and disconnect the Zaurus from the PC.
6. Turn on the power to the Zaurus, and open the copied file.

The folders on the Files Home screen can be opened by tapping them. Display the desired copied file and tap on it.

- For Microsoft® Word files (.doc), the HancomMobileWord application will initiate and open the file.
- For text files (.txt), the Text Editor (or the HancomMobileWord) application will initiate and open the file.
- For Microsoft® Excel files (.xls), the HancomMobileSheet application will initiate and open the file.
- For Microsoft® PowerPoint® files (.ppt), the HancomMobilePresenter will initiate and open the file.
- For image files (.jpg, .gif, .bmp, .png), the Imaging application will initiate and open the file.
- For movie files (.mp1) and music files (.mp3, .wav), the Media Player application will initiate and open the file.

Note:

- *When the Zaurus File Transfer application is opened on the PC, removing the Zaurus from the PC will not close the window automatically. You must close the window manually.*
- *Files that are dragged and dropped will be linked to dates in the Calendar application (see the separate Operation Manual). The dates linked to these files will be the dates the files are transferred. (When the files are modified later, they will be linked to the dates they are modified.)
You can change the date on the Files Home screen or in the Calendar application (see the separate Start-up Guide or Operation Manual).*
- *When image files are dragged and dropped into the "Image_Files" folder, or when text files are dragged and dropped into the "Text_Files" folder, the Imaging or the Text Editor application will automatically start.*
- *It will take a little while to copy large files to the "SD Card" folder.*

Manipulating Folders or Files on the Zaurus on the PC

When the “Internal Flash”, “CF Card”, or “SD Card” folders are opened in Zaurus File Transfer, you can work with them by using the menus on the menu bar. For example, you can copy or delete files or folders, change names, drag and drop files or folders from the “Internal Flash” folder onto the PC, create folders and so on. The following commands on the menu can be used to manipulate folders or files:

File	New	Creates a new folder in the currently opened folder.
	Open	Opens the selected folder. (Files cannot be opened.)
	Rename	Changes the name of the selected file or folder.
	Delete	Deletes the selected files or folders.
	Exit	Quits the Zaurus File Transfer application.
Edit	Cut	Cuts the selected files or folders.
	Copy	Copies the selected files or folders.
	Paste	Pastes the cut or copied files or folders.
View	Up One Level	Moves to the higher folder.
	Refresh	Refreshes the displayed information.
	Toolbar	Displays or hides the toolbar.
	Address Bar	Displays or hides the address bar.
	Status Bar	Displays or hides the status bar.
Help	Help	Displays this operation manual (PDF file).
	Version	Displays the version of the Zaurus File Transfer application.

Example:

- *Moving or Copying a File to Another Folder in the Application Window*
 1. *Select (click) the folder you wish to open and click “Open” from the “File” menu. (Or double-click the folder to open it.)*
 2. *Select the file you wish to move or copy.*
 3. *Select “Cut” or “Copy” from the “Edit” menu.*
 4. *Move to the destination folder in the Internal Flash or an expansion memory card by selecting “Up One Level” from the “View” menu or opening lower folders.*
 5. *Open the destination folder.*
 6. *Select “Paste” from the “Edit” menu.*


Note:

- Clicking icons on the toolbar will move between folders or perform similar actions as the above commands.
- Drag-and-drop operations cannot be performed within this application window.
- Although it is safe to drag and drop files from/to the Zaurus, never do any of the following:
 - Never delete nor rename any of the folders on the Zaurus, such as “Internal Flash”, “CF Card”, “SD Card”, “Image_Files”, or “Text_Files”.
If the structure of these folders is changed, the Zaurus will not operate properly or data you have stored will be lost.

Uninstalling

If it becomes necessary, the Zaurus File Transfer application can be uninstalled. (To add this application again, see the separate Start-up Guide.)

The uninstall operation below is explained for use with Windows XP, if you are using a different OS, uninstall by using “Add/Remove Programs” from Control Panel.

- 1.** Close all the applications installed from the supplied CD-ROM. Right-click the  icon in the Windows system tray and then click “Exit” from the menu.
- 2.** Click the Start menu, then click Control Panel. The Control Panel window will open.
- 3.** Click “Add or Remove Programs”.
- 4.** Select “Sharp Zaurus Software”.
- 5.** Click the “Change/Remove” button. Confirm the displayed message box and click the “OK” button.
(Or click the Start menu, then (All) Programs → Sharp Zaurus 2 → Uninstall, instead of performing steps 2 through 5 above.)
- 6.** Select “Modify” and then click the “Next” button.

Note:

If you select “Remove” in step 6, not only this application but all the applications you have installed from the supplied CD-ROM will be uninstalled.

- 7.** Select the same method of connection as you have selected at installation, then click the “Next” button.
- 8.** Remove the check mark of “Zaurus File Transfer” and then click the “Next” button. The Zaurus File Transfer application will be uninstalled. Follow the instructions on the screen and complete the process.